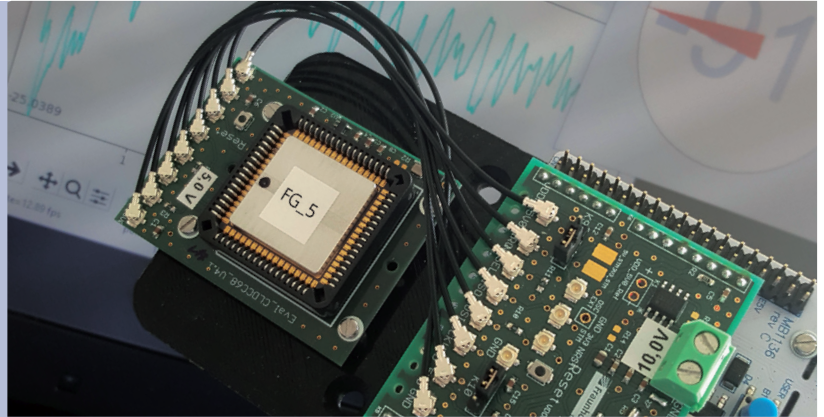
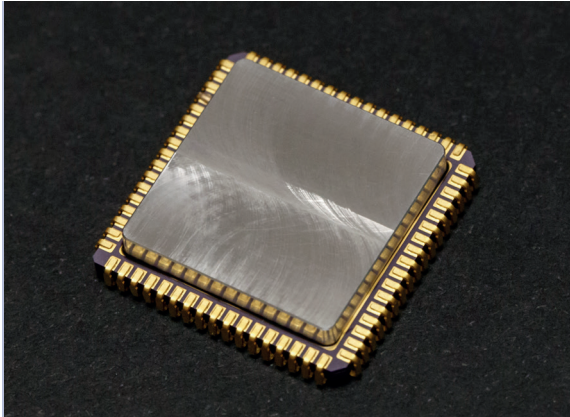


GYROSCOPE SENSOR FG5



Contact

Fraunhofer ENAS

Fraunhofer Institute for Electronic Nano Systems
Technologie-Campus 3
09126 Chemnitz
Germany

Contact person

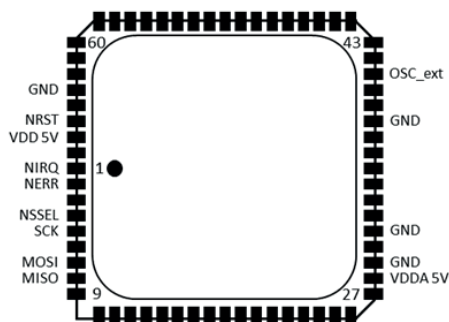
Dr. Roman Forke
Phone +49 371 45001-254
roman.forke@enas.fraunhofer.de

Prof. Dr. Karla Hiller
Phone: +49 371 45001-400
karla.hiller@enas.fraunhofer.de

*Photo acknowledgments: Fraunhofer ENAS
All information contained in this datasheet is preliminary and subject to change. Furthermore, the described systems, materials and processes are not commercial products.*

Features

- Digital angular velocity sensor with SPI interface
- Sensitive on angular rates about the z-axis (yaw)
- ± 450 °/s input range
- Resolution is 5 °/h = 14 mdps (milli degree per seconds)
- Operating temperature range from -40 °C to 85 °C
- Stable external supply voltage of 5 V required



Package dimensions:
Package CLDCC68 (20 x 20 x 5 mm³)

Pin description

Pin#	Name	Remark
1	NIRQ	SPI
2	NERR	SPI
4	NSSSEL	SPI
5	SCK	SPI
7	MOSI	SPI
8	MISO	SPI
28	VDDA_5V	5V power supply - analog
29	GND	0 V supply
31	GND	0 V supply
38	GND	0 V supply
41	OSC_ext	External 32 MHz Oscillator
64	GND	0 V supply
66	NRST	System reset if set to GND
67	VDD_5V	5V power supply - digital